



# **EXCELLENCE**

**IN FABRICATING COPPER TUBES**

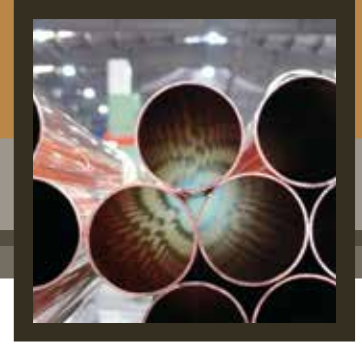
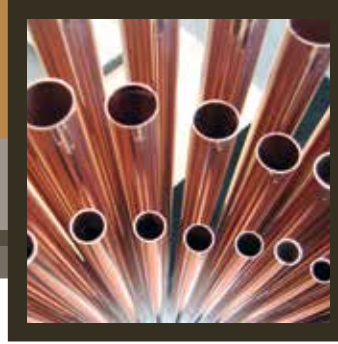
# STRAIGHT COPPER TUBE

**Material** Cu-DHP (C 12 200 / SF-Cu)  
**Chemical Composition** Min. 99.90% Cu, 0.015%-0.040 P  
**Standards** ASTM B280, ASTM B88, EN 1057, EN 12735, EN 12449

STRAIGHT COPPER TUBE SIZES											
Outside Diameter		Wall Thickness				Unit Weight				Length	
(in)	(mm)	MIN		MAX		MIN		MAX		(ft)	(m)
		(in)	(mm)	(in)	(mm)	(lb/ft)	(kg/m)	(lb/ft)	(kg/m)		
3/16"	4.76	0.012	0.30	0.039	1.00	0.025	0.037	0.070	0.105	6.0 - 20.0	2.0 - 6.0
0.196	5.00	0.012	0.30	0.039	1.00	0.026	0.039	0.075	0.112	-	-
0.236	6.00	0.012	0.30	0.039	1.00	0.032	0.048	0.094	0.140	6.0 - 20.0	2.0 - 6.0
1/4"	6.35	0.012	0.30	0.039	1.00	0.034	0.051	0.101	0.150	6.0 - 20.0	2.0 - 6.0
0.276	7.00	0.016	0.40	0.039	1.00	0.050	0.074	0.113	0.168	-	-
5/16"	7.93	0.012	0.30	0.039	1.00	0.043	0.064	0.130	0.194	6.0 - 20.0	2.0 - 6.0
0.315	8.00	0.016	0.40	0.039	1.00	0.057	0.085	0.131	0.196	6.0 - 20.0	2.0 - 6.0
3/8"	9.52	0.012	0.30	0.039	1.00	0.052	0.077	0.159	0.238	6.0 - 20.0	2.0 - 6.0
0.394	10.00	0.016	0.40	0.039	1.00	0.072	0.107	0.169	0.252	6.0 - 20.0	2.0 - 6.0
0.433	11.00	0.016	0.40	0.039	1.00	0.080	0.119	0.188	0.280	6.0 - 20.0	2.0 - 6.0
0.472	12.00	0.016	0.40	0.039	1.00	0.087	0.130	0.206	0.308	6.0 - 20.0	2.0 - 6.0
1/2"	12.70	0.014	0.35	0.039	1.00	0.081	0.121	0.219	0.327	6.0 - 20.0	2.0 - 6.0
0.512	13.00	0.016	0.40	0.039	1.00	0.094	0.141	0.225	0.336	6.0 - 20.0	2.0 - 6.0
0.531	13.50	0.016	0.40	0.039	1.00	0.098	0.147	0.235	0.350	6.0 - 20.0	2.0 - 6.0
0.551	14.00	0.016	0.40	0.039	1.00	0.102	0.152	0.243	0.363	6.0 - 20.0	2.0 - 6.0
0.591	15.00	0.016	0.40	0.039	1.00	0.109	0.163	0.262	0.391	6.0 - 20.0	2.0 - 6.0
5/8"	15.87	0.016	0.40	0.039	1.00	0.116	0.173	0.279	0.416	6.0 - 20.0	2.0 - 6.0
0.630	16.00	0.016	0.40	0.039	1.00	0.117	0.174	0.281	0.419	6.0 - 20.0	2.0 - 6.0
0.669	17.00	0.020	0.50	0.039	1.00	0.155	0.231	0.299	0.447	6.0 - 20.0	2.0 - 6.0
0.709	18.00	0.020	0.50	0.039	1.00	0.164	0.245	0.318	0.475	6.0 - 20.0	2.0 - 6.0
0.748	19.00	0.020	0.50	0.059	1.50	0.173	0.258	0.492	0.734	6.0 - 20.0	2.0 - 6.0
3/4"	19.05	0.020	0.50	0.059	1.50	0.174	0.259	0.493	0.736	6.0 - 20.0	2.0 - 6.0
0.787	20.00	0.039	1.00	0.059	1.50	0.356	0.531	0.520	0.776	6.0 - 20.0	2.0 - 6.0
0.866	22.00	0.039	1.00	0.059	1.50	0.393	0.587	0.576	0.860	6.0 - 20.0	2.0 - 6.0
7/8"	22.22	0.039	1.00	0.059	1.50	0.397	0.593	0.582	0.869	6.0 - 20.0	2.0 - 6.0
0.894	22.70	0.039	1.00	0.059	1.50	0.407	0.607	0.596	0.889	-	-
0.984	25.00	0.039	1.00	0.059	1.50	0.450	0.671	0.661	0.986	6.0 - 20.0	2.0 - 6.0
1"	25.40	0.039	1.00	0.059	1.50	0.457	0.682	0.671	1.002	6.0 - 20.0	2.0 - 6.0
1.102	28.00	0.039	1.00	0.059	1.50	0.506	0.755	0.744	1.111	6.0 - 20.0	2.0 - 6.0
1 1/8"	28.67	0.039	1.00	0.059	1.50	0.519	0.774	0.763	1.139	6.0 - 20.0	2.0 - 6.0
1.181	30.00	0.039	1.00	0.059	1.50	0.543	0.811	0.801	1.195	6.0 - 20.0	2.0 - 6.0
1 3/8"	34.92	0.039	1.00	0.059	1.50	0.635	0.948	0.939	1.402	6.0 - 20.0	2.6 - 6.0
1.378	35.00	0.039	1.00	0.059	1.50	0.637	0.951	0.941	1.405	6.0 - 20.0	2.0 - 6.0

**Not:** Please contact our Marketing Department for the sizes between  $\varnothing$  35 - 108 mm copper tubes and non listed sizes.





### STRAIGHT COPPER TUBES (LARGE SIZES)

Outer Diameter (mm)	Wall Thickness (mm)	Unit Weight (kg/m)	Outer Diameter (mm)	Wall Thickness (mm)	Unit Weight (kg/m)
35.00	0.90	0.858	64.00	1.80	3.130
35.00	1.00	0.951	64.00	2.00	3.467
35.00	1.20	1.134	64.00	4.10	6.867
35.00	1.30	1.225	64.00	4.40	7.332
35.00	1.40	1.315	66.00	1.90	3.405
35.00	1.50	1.405	76.00	2.00	4.138
42.00	0.90	1.034	76.00	2.10	4.339
42.00	1.00	1.146	76.10	2.50	5.145
42.00	1.20	1.369	76.10	2.80	5.738
42.00	1.40	1.589	80.00	2.00	4.362
42.00	2.00	2.237	80.00	2.30	4.997
42.00	2.20	2.448	89.00	2.00	4.865
54.00	1.00	1.482	92.00	2.30	5.768
54.00	1.20	1.772	104.70	2.80	7.977
54.00	1.40	2.059	105.00	2.30	6.604
54.00	1.50	2.202	105.00	2.50	7.165
54.00	2.00	2.908	108.00	2.30	6.797
54.00	3.30	4.678	108.00	2.50	7.374
54.00	3.70	5.204	108.00	4.50	13.022

### PACKING

Packing Type	DIMENSIONS (mm)				Net Weight (kg)	Tare (kg)
	A	B	C	E		
Wooden Case	350-500	200-500	100	2,500-6,300	500-1,000	40-180
Steel Container	580	400	140	5,200	700-1,100	203-255

Straight tubes are delivered in wooden cases, steel containers (returnable) or special of our customers.

